

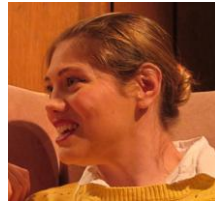
Cast
in order of appearance



Eleanor Vance
Zoe Parker



Mrs Dudley
Helen Griffiths



Theodora
Kirsty Johnstone



Dr Montague
David Pascoe-Clark



Luke Sanderson
Brian Paterson



Mrs Montague
Louise Parfrey



Arthur Parker
Craig Weaver

Scenes

Act 1

Prologue

1a – Late afternoon (parlour)

Scene 1b – Later that afternoon (parlour)

Scene 2 – That night (Eleanor's bedroom)

Scene 3 – Late morning (the following day) (parlour)

Act 2

Scene 1 – That evening (parlour)

Scene 2a – The next evening (parlour)

Scene 2b – The next evening (Eleanor's bedroom)

Scene 3 – The following morning (parlour)

Epilogue

Behind the Scenes

Director

Charlotte Lawrence

Costumes

Members of the cast

Hair Stylist

Paul Taylor

Prompt

Ralph Tilton

Stage Manager

Charlotte Lawrence

Assistant Stage Manager

Andrew Stowe

Set Designer

Kevin Lawrence

Scenic Construction

Ria Hodson-Walker,
Ian Fell-Palmer, Andrew and Kevin

Lighting & Sound Design Charlotte & Kevin Lawrence

Lighting Operative

Jessica Lawrence

Sound Operative

Kevin Lawrence

Stage Crew

Ria, Charlotte & Andrew

Props

Members of the company

Furniture

Charlotte & Kevin

Box Office

Community Centre Staff

Front of House

Members of the Players

The Committee

Chairman – Kirsty Johnstone Treasurer – Kevin Lawrence
Secretary – John Blackwood Stage Director – Charlotte Lawrence
Publicity Manager – Andrew Stowe

Would you like to join Hanham Players?

Do you fancy “treading the boards” or learning new skills “behind the scenes”? We are always looking for new members on and off stage! We put on three shows each year and these productions vary from our family favourite pantomime to serious plays and farces to musicals and musical revues. If you’re interested or think you can help in any way please check out our website for more details www.hanhamplayers.org. You will be warmly welcomed; we hope to see you here soon.

There will be a short interval of 20 minutes between acts and please be aware that the use of photographic or filming equipment is strictly prohibited by the production licence.

Please turn your mobile phone off or to silent mode.

If you would like to receive more information, discounts and first option on tickets then join our eMailing list at subscribe@hanhamplayers.org and type ‘Join eMailing list’ as the subject.

more based upon the idea that children had died and were trapped in the house as Hugh Crain won’t let them leave and they need Eleanor to save them from Crain. This is a Dreamworks production and as such there are a lot of special effects at work. This was filmed at a dome-shaped hangar in California and at Harlaxton Manor in the UK.



The play is closer to the first film in that...well we won’t spoil it, you can find out for yourselves.

A note from our director...

Initially I was going to direct a different show, sadly there was not enough interest; so I decided to search for other scripts that sparked my interest.

The Haunting of Hill House is a story I’ve kind of grown up with since a young teenager; when I discovered it had been adapted for the stage I leapt at the chance to direct it.

The small cast have worked extremely hard to bring the characters to life and worked even harder to learn the ever so many lines each one of them has.

The stage crew have built me a set that is dark and foreboding as Hill House should be and Kev and I have trawled eBay and many junk shops to buy furniture that’s just right for the production.

This is not a well known story but for those who do know it I hope you find we have done it justice; for those that are new to the tale I hope we don’t scare you too much.

That said, enjoy yourselves, have a safe journey home afterwards and I sincerely hope you can sleep soundly tonight.

Thanks, Charlotte x

A bit of Hill House History...

The Haunting of Hill House is a 1959 novel by author Shirley Jackson. It was considered one of the best literary ghost stories published during the 20th century. It has been made into two feature films and the play you're about to watch this evening.

The first film, called The Haunting was made in 1963 stars Julie Harris, Claire Bloom, Richard Johnson and Russ Tamblyn and was filmed at MGM-British Studios and on location at Ettington Park (now Ettington Park Hotel), Warwickshire. It is quite close to the novel in many respects. The exterior of Ettington Park is perfect for Hill House; none of it is symmetrical adding to the odd experiences supposed to be felt at Hill House. When the film was released in 1963 it was criticised for being incoherent, although today it has achieved cult status and considered by many to be one of the best horror films in cinematic history and the most unsettling. In 2010 The Guardian ranked it as the 13th best horror film of all time; Martin Scorsese placed it at 11th.



The second film, also called The Haunting is very loosely based on the novel and stars Liam Neeson, Catherine Zeta-Jones, Owen Wilson and Lili Taylor. It was released in the US in July 1999. The tale of Hill House in this movie is



Need a room for a function?

Hanham Community Centre



967 4439
www.hanhamcentre.org

Have a Party *Have a Ball*

Two Large function suites - each with stage and bar
Organise your own food & entertainment
Ample Parking, Low Hire Rates

**Christening, Birthdays, Engagements,
Weddings, Anniversaries, Families,
Work Parties, Funerals**

21st, 30th, 40th, 50th, 60th, 70th and more



Our next production in September is ...

Sensational 70's

a musical revue of your favourite 70's hits!

This will be on the 16, 18, 19 September.

Take a moment to have a look at our new venture; Hanham Players Youth Group...



Ages 7-16, just turn up here at 7pm each Friday during term time; unless Hanham Players have a production imminent. It only costs £1 each week and £6 annual membership. Contact Kirsty on 07807232876 if you're interested.

