

Hanham Folk Centre Players

(AGM 2006)

BALANCE SHEET

1 April 2005 - 31 March 2006

	£	<u>(05/06)</u>	<u>(04/05)</u>
<u>Reserve Assets:</u>			
Hanham Players Reserve Account	3,028.87		1,002.10
Funds held by HFC	0.00		0.00
		<u>3,028.87</u>	<u>1,002.10</u>
<u>Current Assets:</u>			
Bank Account	1,119.93		118.40
Cash In Hand	111.08		152.91
Debtors	0.00		0.00
Prepayments	0.00		355.91
		<u>1,231.01</u>	<u>627.22</u>
<u>Current Liabilities:</u>			
Trade Creditors	0.00		0.00
Accrued Costs	0.00		0.00
		<u>0.00</u>	<u>0.00</u>
		<u>4,259.88</u>	<u>1,629.32</u>
Net Current Assets			
<u>Funds Employed:</u>			
Accumulated Funds at 1 Apr 05		<u>1,629.32</u>	<u>758.88</u>
Profit/Deficit for the year		<u>2,603.79</u>	<u>867.14</u>
Interest on Reserve		<u>26.77</u>	<u>3.30</u>
Accumulated Funds at 31 Mar 06		<u>4,259.88</u>	<u>1,629.32</u>
		<u>4,259.88</u>	<u>1,629.32</u>
Funds Employed			

Notes:

- 1 Membership stands slightly up at 26, a pleasing change of trend and mainly due to new Stage Crew.
- 2 I am once again pleased to report an operating surplus of £2603, much aided by a grant of £600 for Annie and great houses. We have also paid our HFC section charge in full.
- 3 FY04/05



Accounts prepared by HFPC treasurer:

Kevin Lawrence

5th April 2006

Hanham Folk Centre Players

(AGM 2006)

OPERATING COST STATEMENT

1 April 2005 - 31 March 2006

	And ttw None (May 05)	Annie (Oct 05)	Mother Goose (Jan 06)	General Account	Total 05/06	Total 04/05
<u>INCOME</u>						
Ticket Sales	875.00	4,424.50	4,361.60		9,661.10	6076.50
Script Sales			35.00		35.00	95.00
Programmes	25.80	181.50	79.60		286.90	74.30
Misc.	1	909.25	252.50	891.44	2,053.19	416.55
Memberships			24.00	276.00	300.00	296.00
Total	900.80	5,515.25	4,752.70	1,167.44	12,336.19	6958.35
<i>FY04/05</i>	<i>662.50</i>	<i>1,360.10</i>	<i>4,625.75</i>	<i>310.00</i>	<i>6,958.35</i>	
<u>EXPENDITURE</u>						
Scripts		224.98	47.08		272.06	89.10
Licence	150.00	779.81	250.00		1,179.81	409.00
Administration	9.05	93.72	35.20	94.00	231.97	109.90
Rose Bowl	35.00	35.00	35.00		105.00	70.00
Poster/Flyers	11.75	16.45	32.00		60.20	67.94
Programmes	6.00	84.00	23.92		113.92	6.00
Stage	144.69	284.69	118.59	222.44	770.41	250.07
Lighting	50.00	209.55	168.43		427.98	382.64
Sound	10.00	381.62	334.45	648.94	1,375.01	351.96
Effects		326.40	320.00		646.40	463.40
Musicians		600.00	508.43		1,108.43	725.00
Food		27.00	53.85		80.85	264.75
Props & Furniture	3.54	24.60			28.14	0.00
HFC Section Charge				2,500.00	2,500.00	2500.00
Costumes and Fabric		100.00	489.73		589.73	374.00
Misc.	2		21.50	220.99	242.49	27.45
Total	420.03	3,187.82	2,438.18	3,686.37	9,732.40	6091.21
<i>FY04/05</i>	<i>467.90</i>	<i>1274.38</i>	<i>1762.53</i>	<i>2586.40</i>	<i>6,091.21</i>	
Surplus/Loss	480.77	2,327.43	2314.52	(2518.93)	2,603.79	867.14
<i>FY04/05</i>	<i>194.60</i>	<i>85.72</i>	<i>2,863.22</i>	<i>(2276.40)</i>	<i>867.14</i>	
Operating Surplus for FY05/06					2,603.79	867.14

Notes:

1 Misc Income included £600 Grant for Annie and 2 Car Boot Sales

2 Misc. Exp includes 25% payment from Car Boot Sales to HFC.

Hanham Folk Centre Players

(AGM 2006)

CASH FLOW STATEMENT

1 April 2005 - 31 March 2006

	<u>Bank Account</u>	<u>Cash</u>	<u>Reserve Account</u>	<u>Total</u>
Opening Balances	474.31	152.91	1,002.10	<u>1,629.32</u>
Operating Surplus	2,603.79			
Transfer to/from Reserve	(2000.00)		2,000.00	
Interest			26.77	
Transfer to/from Cash	41.83	(41.83)		
Prepayments	0.00			
Closing Balances	<u>1,119.93</u>	<u>111.08</u>	<u>3,028.87</u>	<u>4,259.88</u>

Figures for HFC Accounts

	<u>2005/6</u>	<u>2004/5</u>
Income	12,336	6,958
Expenditure	7,232	3,591
Contribution	2,500	2,500

Hanham Folk Centre Players

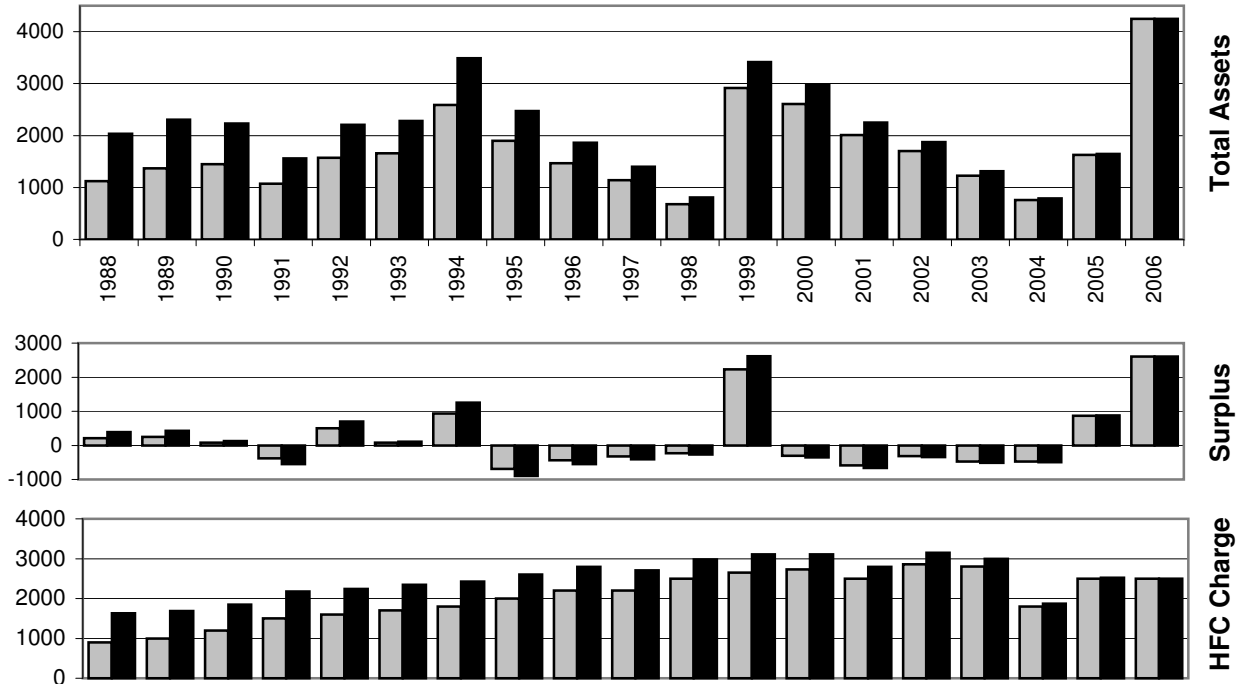
AGM 2006

HISTORICAL INFORMATION

1 April 1987 - 31 March 2006

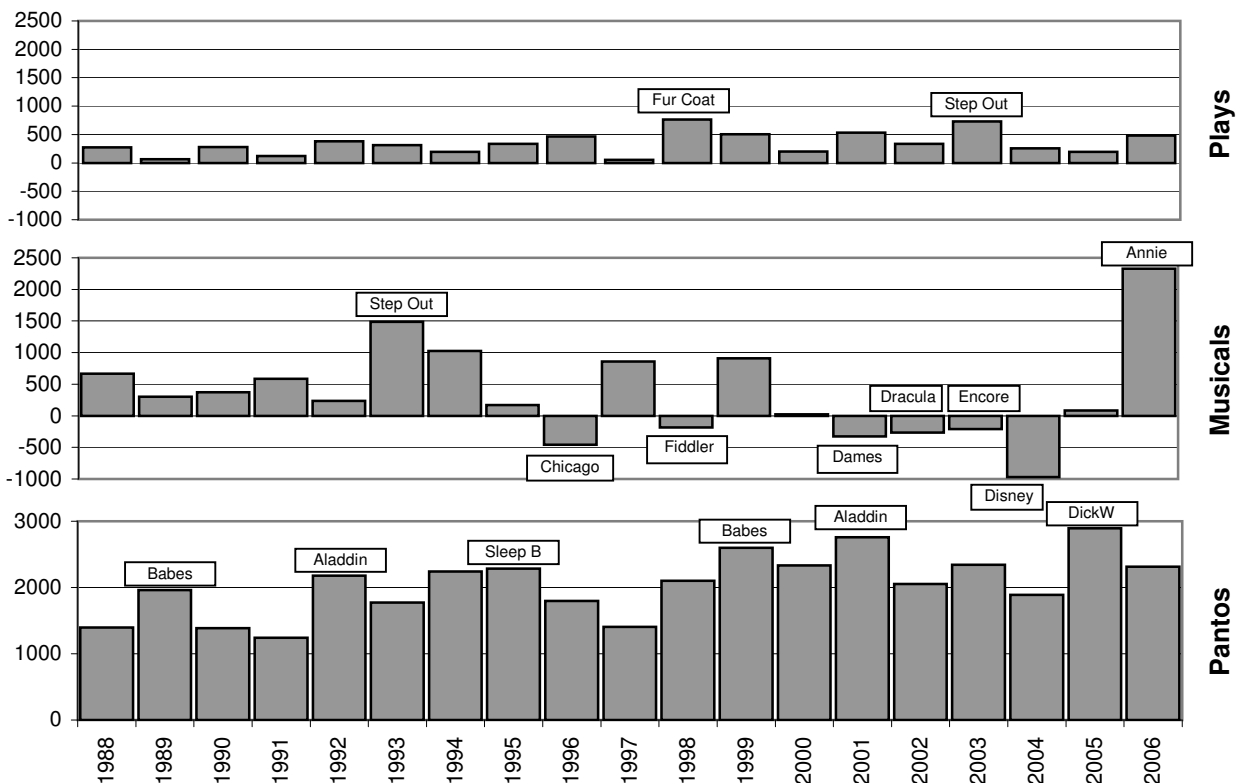
Financial Information

Actual (grey)
2006 prices (black)



Production Surplus by Type (1988-2006)

All at 2006 Prices



Typical Year: Income: Play £300, Muscial £300, Panto £2100, Membership £300 = £3000
Expenditure: HFC Charge £2500, Gen: £500 = £3000. Net Change: 0 on assets of £2200