

Hanham Folk Centre Players

(AGM 2007)

BALANCE SHEET


1 April 2006 - 31 March 2007

	£	<u>(06/07)</u>	<u>(05/06)</u>
<u>Reserve Assets:</u>			
Hanham Players Reserve Account	4,035.20		3,028.87
Funds held by HFC	0.00		0.00
		<u>4,035.20</u>	<u>3,028.87</u>
<u>Current Assets:</u>			
Bank Account	834.64		1,119.93
Cash In Hand	27.83		111.08
Debtors	0.00		0.00
Prepayments	0.00		0.00
		<u>862.47</u>	<u>1,231.01</u>
<u>Current Liabilities:</u>			
Trade Creditors	0.00		0.00
Accrued Costs	0.00		0.00
		<u>0.00</u>	<u>0.00</u>
		<u>4,897.67</u>	<u>4,259.88</u>
<u>Funds Employed:</u>			
Accumulated Funds at 1 Apr 06		<u>4,259.88</u>	<u>1,629.32</u>
Profit/Deficit for the year		571.46	2,603.79
Interest on Reserve		66.33	26.77
Accrued Costs		<u>0.00</u>	<u>0.00</u>
Accumulated Funds at 31 Mar 07		<u>4,897.67</u>	<u>4,259.88</u>
		<u>4,897.67</u>	<u>4,259.88</u>

Notes:

- 1 Membership stands slightly down at 23, and has dropped since the membership fees were taken last year.
- 2 I am pleased to report a surplus of £638; as always supported by the panto, and as such I am pleased to report that we have also paid our HFC section charge in full.
- 3 These accounts were presented to the AGM of HFCP on 25th April 2007.
- 4 £400 has been allocated in 2006/7 for amplifier and backcloth, but has not yet been sent. This cost will carry forward into 2007/8 accounts. (This is not shown in these accounts.)

Accounts prepared by HFCP treasurer: plus 1


Kevin Lawrence

16th April 2007

Hanham Folk Centre Players

(AGM 2007)

OPERATING COST STATEMENT

1 April 2006 - 31 March 2007

	<u>Tiptoe Tomb (May 06)</u>	<u>Annie Warbuks (Oct 06)</u>	<u>Hansel & Gretel (Jan 07)</u>	<u>General Account</u>	<u>Total 06/07</u>	<u>Total 05/06</u>
<u>INCOME</u>						
Ticket Sales	845.00	2,793.50	4,308.80		7,947.30	9661.10
Script Sales			30.00		30.00	35.00
Programmes	18.60	125.00	116.50		176.85	286.90
Misc.			55.00	435.25	490.25	2053.19
Raffle		210.00	255.50			
Sweets/Food		57.02	91.46			
Memberships		33.00	24.00	240.00	297.00	300.00
Total	863.60	3,218.52	4,881.26	675.25	9,638.63	12336.19
<i>FY05/06</i>	<i>900.80</i>	<i>5,515.25</i>	<i>4,752.70</i>	<i>1,164.44</i>	<i>12,336.19</i>	
<u>EXPENDITURE</u>						
Scripts		251.42	97.50		348.92	272.06
Licence	140.00	443.20	300.00		883.20	1179.81
Administration	15.12	20.65	32.10	101.69	169.56	231.97
Rose Bowl	35.00	42.20	48.05		125.25	105.00
Poster/Flyers	9.40	18.33	50.12	31.30	109.15	60.20
Programmes	8.90	56.00	42.99		107.89	113.92
Stage	84.22	248.02	159.51	186.04	677.79	770.41
Lighting	85.00	124.98	246.59		456.57	427.98
Sound	28.68	824.10	490.59		1,343.37	1375.01
Effects		63.45	87.84		151.29	646.40
Musicians		755.00	450.00		1,205.00	1108.43
Food		32.00	60.49	27.74	120.23	80.85
Props & Furniture	9.32	91.69	12.37	19.95	133.33	28.14
HFC Section Charge				2,500.00	2,500.00	2500.00
Costumes and Fabric	31.73	48.95	466.88		547.56	589.73
Raffle		49.81	14.96			
Misc.	1			123.29	123.29	242.49
Total	447.37	3,069.80	2,559.99	2,990.01	9,067.17	9732.40
<i>FY05/06</i>	<i>420.03</i>	<i>3187.82</i>	<i>2438.18</i>	<i>3686.37</i>	<i>9,732.40</i>	
Surplus/Loss	416.23	148.72	2321.27	(2314.76)	571.46	2,603.79
<i>FY05/06</i>	<i>480.77</i>	<i>2,327.43</i>	<i>2,314.52</i>	<i>(2518.93)</i>	<i>2,603.79</i>	
Operating Surplus for FY06/07					571.46	

Notes:

1 Misc. Exp includes 25% payment from Car Boot Sales to HFC.

Hanham Folk Centre Players

(AGM 2007)

CASH FLOW STATEMENT

1 April 2006 - 31 March 2007

	<u>Bank Account</u>	<u>Cash</u>	<u>Reserve Account</u>	<u>Total</u>
Opening Balances	1,119.93	111.08	3,028.87	<u>4,259.88</u>
Operating Surplus	571.46			
Transfer to/from Reserve	(940.00)		940.00	
Transfer to/from Cash	83.25	(83.25)		
Interest			66.33	
Closing Balances	<u>834.64</u>	<u>27.83</u>	<u>4,035.20</u>	<u>4,897.67</u>

Figures for HFC Accounts

	<u>2006/7</u>	<u>2005/6</u>
Income	9,639	12,336
Expenditure	6,567	7,232
Contribution	2,500	2,500
Funds Held	4,898	4,260

Hanham Folk Centre Players

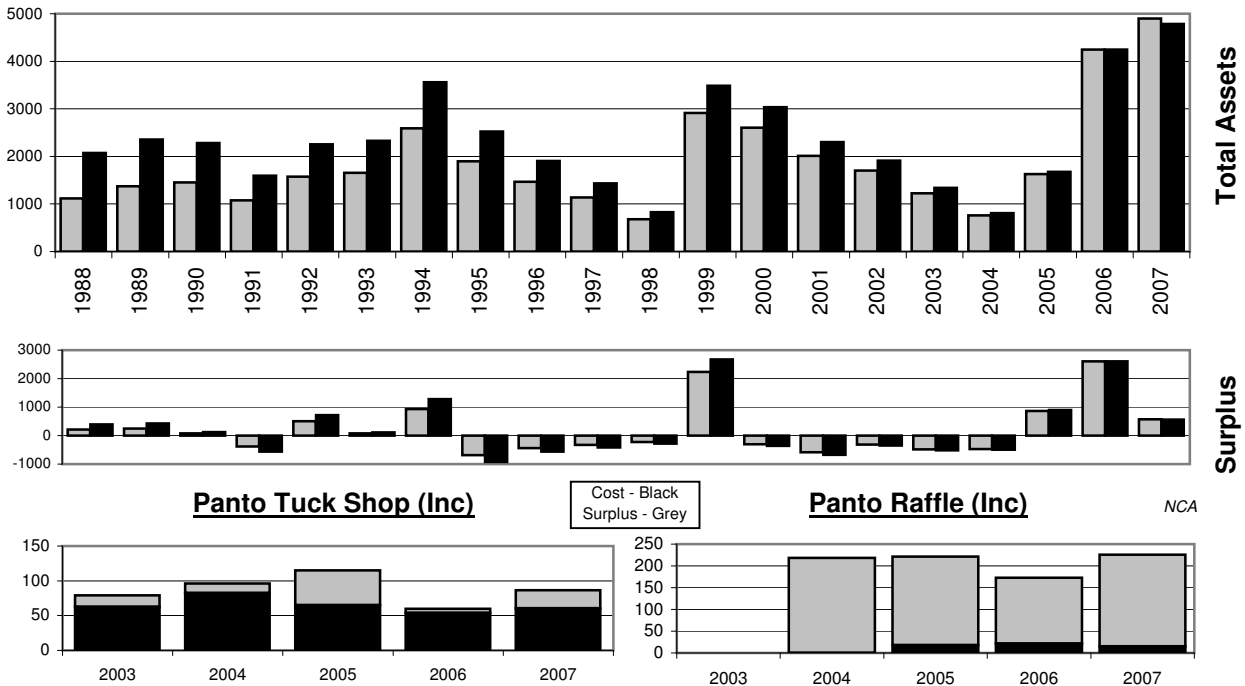
AGM 2007

HISTORICAL INFORMATION

1 April 1987 - 31 March 2007

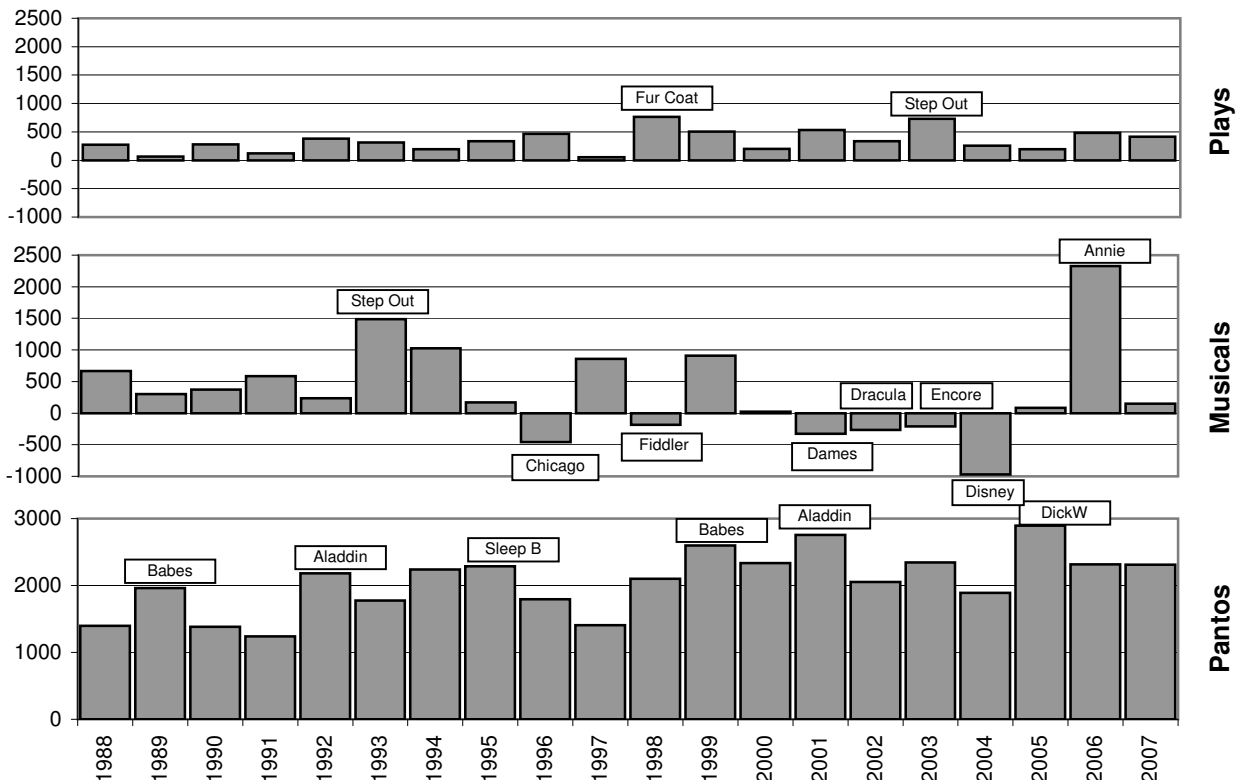
Financial Information

Actual (grey)
2006 prices (black)



Production Surplus by Type (1988-2007)

All at 2006 Prices



Typical Year Model:

Surplus Income: Play £350, Muscial £350, Panto £2100, Members £250, Raffles £400 = £3450

Expenditure: HFC Charge £2600, Gen: £400 = £3000. Net Change: +£450. With assets of £4900